

WANA

Webinar Series

# We Are Not Alone: Growing Stronger Together



Clubhouse Europe

Changing the World of Mental Health



Clubhouse International

Creating Community: Changing the World of Mental Health

**FOUNTAIN  
HOUSE**

Inspiring Communities  
for Mental Health



# Magnolia Clubhouse: Integrating Education into the Work Ordered Day

By: Marty Seeholzer, Eric Heath, and Cassidy Yatsko

WANA

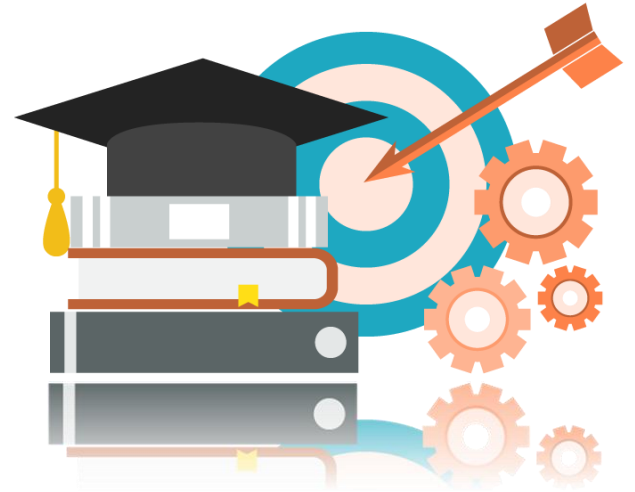
1

Webinar Series

**We Are Not Alone:  
Growing Stronger Together**

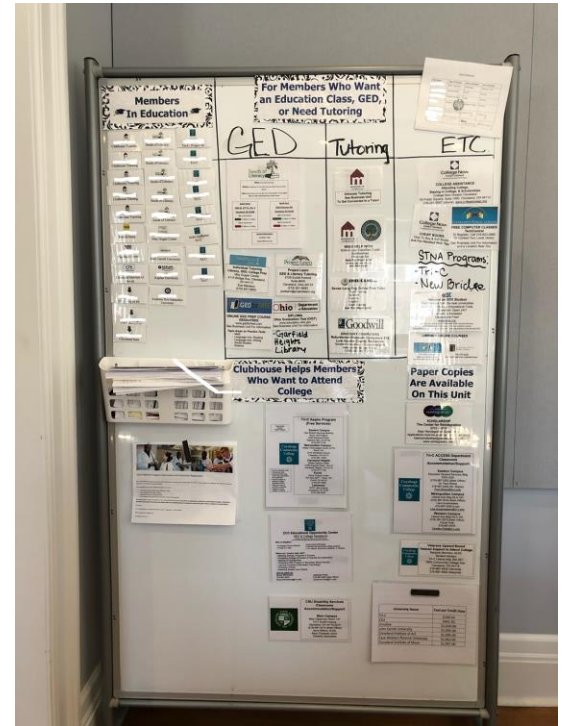
# Fall of 2017: Evolution

- Location: Membership Unit
- Education Resources
- Education Board: Resources and Members in Education displayed.
- Education tracked and reported as is employment.
- Employment and Education Dinners



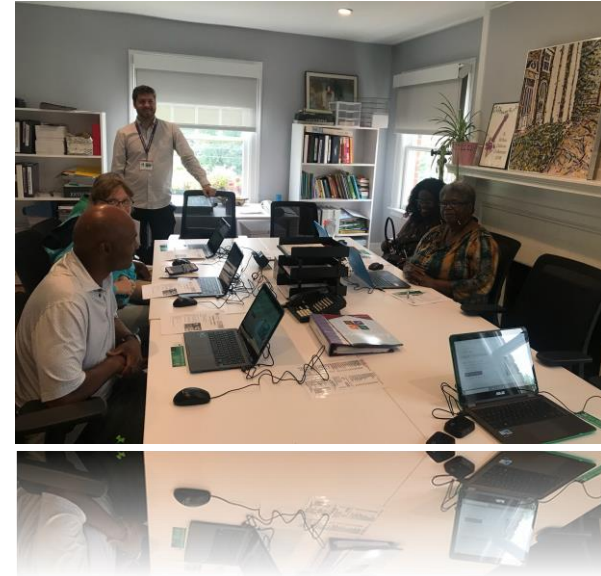
# Resources Available

- Literacy Skills Training
- High School Courses
- College Resources
- Online Educational Opportunities
- Clubhouse Tutoring



# Moving Forward: Improving Educational Supports

- Weekly Education and Employment meetings.
- Computer Courses from Local Library in-house.
- University representatives visiting Clubhouse.
- Side-by-side meetings on campus with University staff.
- Shared responsibility amongst staff.



# Fountain House Training on Supporting Education

## Observed/Learned:

- Member led courses.
- Scholarships:
  - Began in the Summer of 2018 (Add number of scholarships given out in first year) - Now current year
  - \$350 a person per semester





WANA

# Transition to Online Education: Eric's Experience





**Standard # 25: The Clubhouse assists members to reach their vocational and educational goals by helping them take advantage of educational opportunities in the community. When the Clubhouse also provides an in-house education program, it significantly utilizes the teaching and tutoring skills of members.**